



VALVE SOLUTIONS FOR THE  
**VEHICLE WASHING TECHNOLOGY**

Engineering . Valves . Solutions .



# COMPONENTS FOR WASHING TECHNOLOGY SOLUTIONS



**Solenoid valve** for fresh water supply or for water treatment

2/2-way servo controlled diaphragm solenoid valve

Material: nickel-plated brass

Pressure range: 0,5-16 bar

**Modular in-line valve, optionally with integrated bypass (incl. check valve) for feeding external media additives**



**Water battery** for fresh water or domestic water distribution

Included are:

Five 2/2-way servo-controlled diaphragm block valves

Foam generator

Check valves

Strainer

**Modular in-line valve, optionally with integrated bypass. (incl. check valve) for feeding external media additives**



**High pressure valve** for the prewash

2/2-way pneumatically controlled 2-fold high pressure manifold block with two outlets via high pressure screw connection G3/8

Material: brass

Pressure range: 0-100 bar

Air connection via angled push-in fitting

Available in 1-fold to 4-fold block versions

**For supplying high-pressure components, e.g. wheel washer nozzles**



## Water distribution block for underbody washing

Water inlet: G1

Four outlets G1/2

Control via angled hose connection 6/4, central water inlet G1 for all consumers

Distribution block/control cylinder: brass electropolished

Direct pressure controlled

**For supplying the nozzle pipes of the underbody wash. This distributor block was specially developed for the washing technology.**



## Foam generator

Included are:

Foam pipe

Check valves with fixed hose connection

Pressure regulator

Pressure gauge

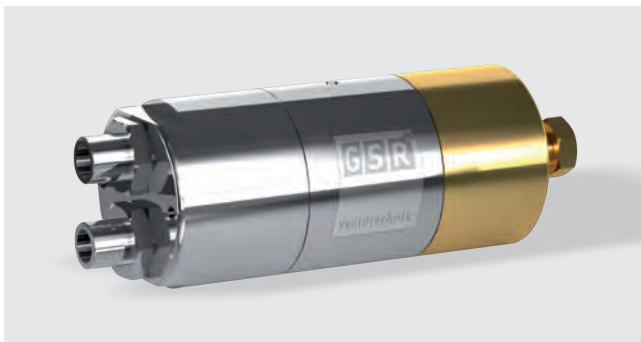
Elbow fitting

Hose nozzle

Ball valve

Opening pressure: 0.7 bar

**For the generation of foam during shampoo washing**



## Rim cleaner pump

Pressure controlled piston pump with spring return

Pressure range: 1-10 bar

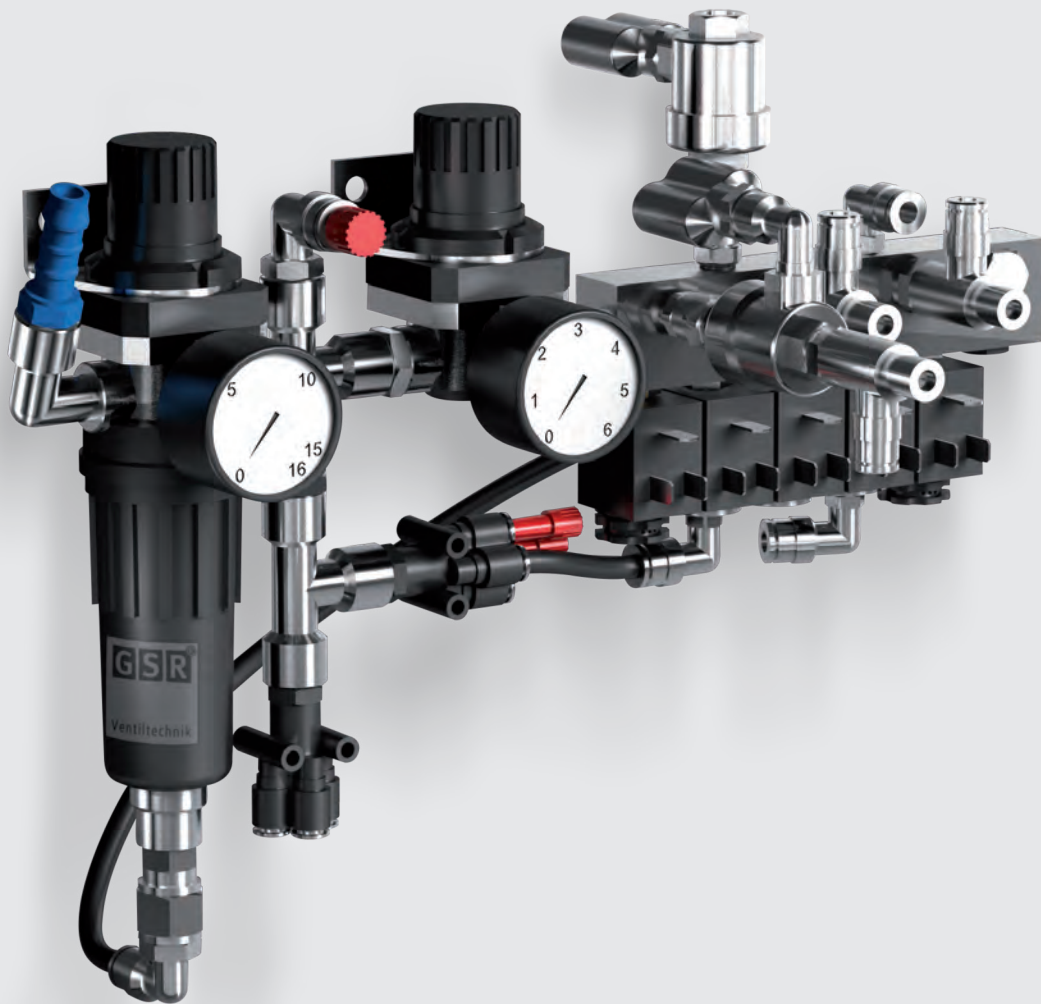
Dosing quantity: 1-50 ml per stroke (infinitely adjustable via adjusting screw)

Inlet/outlet via screw connection G1/4 with check valve

Control air via plug nipple 6/4

**For the dosage and distribution of Water and washing additives**

# PNEUMATIC UNIT



GSR-011-BR-EN-12-2022 / The GSR logo is a registered trademark of GSR Ventiltechnik GmbH & Co. KG / Original products may differ from the product photos shown due to different materials, etc. / Errors and omissions excepted.

for the control of the entire washing plant

**Consisting of:**

- Filter regulator
- Oiler
- Pressure regulator
- Terminal block

**Compact supply or distribution of the compressed air to the components (e.g. metering pumps) and all pneumatic components**

## Our delivery program

- Solenoid valves
- Pressure controlled valves
- Motor valves
- Special valves according to customer requirements
- Accessories

Other options on request



GSR Ventiltechnik  
GmbH & Co. KG

Im Meisenfeld 1  
D-32602 Vlotho

T +49 5228 779-0  
F +49 5228 779-190

info@ventiltechnik.de  
www.gsrvalves.com